

BEScube System

Besco Building Supplies (SEA) Pte Ltd

26 Ubi Road 4 The Besco Building Singapore 408613

t (65) 6286 0666 f (65) 6741 3430

sales@besco.sg www.besco.sg

Statements and recommendations provided by BESCO™ either communicated through publication or verbally are based on empirical data and experience acquired to date. Laminated HPL panels may be subjected to changes due to application methods, substrate variations and environmental conditions. Images appearing in our publication / website are meant to be used as reference materials. No liability may be derived from it as results may vary individually.

ZMS-SS+FlatBar13-10.001

Besco™
MANAGING SPACE

ZMS

Customised Fixed Panel

ZMS full stainless steel system reigns as the strongest among the others in the ZMS series. The robustness of the material makes it a favourite selection to be installed from shopping malls to offices. Modernism is highly associated with this system configuration as it portrays a perfect blend of beauty and strength.

ZMS Accessories + Specifications + Drawings

Stainless Steel + Stainless Steel (grade 304)

General

BESCO™ supply and install* ZMS Restroom Cubicle System, which is highly resistant against water, chemical and impact.

Materials

All accessories and hardware/fittings shall be made of stainless steel grade 304. The doors, pilasters and intermediate partitions shall be 12mm thick High Pressure Laminates (HPL) compact board (or phenolic board) with chamfered edges.

HPL compact boards are manufactured from sheets of special kraft and decor papers, impregnated with thermosetting synthetic resins, fused together under heat and high pressure. HPL compact board has laminates on both sides with either matt finish or textured finish. The performance of the board is tested according to BS EN Standards and has the following rating:

- | | |
|---------------------------|--------------------------------|
| ► Boiling Water (EN438-7) | : 8.4 (Within max. 11.5) |
| ► Fire Rating (EN476-6/7) | : Class 1 (meet min. 1) |
| ► Impact (EN438-11) | : 2.8 Newton (exceed min. 2.0) |
| ► Stain (EN438-15) | : 5 (exceed min. 4) |
| ► Scratch (EN438-2) | : 4 Newton (exceed min. 2.0) |

It is a natural occurrence under various climatic conditions that HPL compact boards may undergo dimensional changes of tolerance differences within ±5mm.

HPL compact boards used in our systems are certified by Singapore Environment Council with Singapore Green Label.

Doors

All doors shall be of single colour, 12mm thick HPL compact board with chamfered edge. Each will be supported by 3 Stainless Steel Hinges (4 Stainless Steel Hinges for Door width ≥ 750mm) affixed to the pilaster, completed with Stainless Steel Coat Hook and Stainless Steel Door Knob. Doors will be routered at its vertical ends and incorporated with Rubber Sponge to dampen noise.

Pilasters

All pilasters shall be of same colour as doors, 12mm thick HPL compact board with router to facilitate Rubber Sponge in noise dampening and completed with Stainless Steel Thumbturn for locking doors. Colours different from doors are available upon request. The pilaster shall be anchored to the floor using Stainless Steel Adjustable Leg (base Ø64mm) with threaded rod for stability. The floor clearance is 150mm. BESCO™ recommends standard pilaster width to be 300mm and end pilaster width to be 150mm for maximum stability.

Intermediate Partitions

All intermediate partitions shall be of same colour as door, 12mm thick HPL compact board with Stainless Steel U-channel, 21.5mm x 14.5mm x 1mm (cross-section dimension, L x W x Thk), affixed at its ends (to the wall and pilaster). To improve stability of the system, BESCO™ recommends that length exceeding 1700mm to be fitted with an extra Pedestal or increase thickness to 19mm HPL compact board.

Top Rail

Stainless Steel Flat Bar, 12mm x 6mm x 6000mm (W x H x L), shall be section fixed onto the top of the pilaster for maximum strength, stability and alignment of the system.

Accessories

Each restroom cubicle will be equipped with the following accessories:

- BESCO™ Stainless Steel Door Knob of Ø42mm.
- BESCO™ Stainless Steel Thumbturn with occupancy indicator. Stainless Steel Lock Set is also available upon request.
- BESCO™ Stainless Steel Coat Hook with rubber stopper comes with/ without cover and allow load up to 25kg.
- BESCO™ Stainless Steel Hinges with cover, adjustable from fully close to open at interval of 15°.
- BESCO™ Stainless Steel Adjustable Leg with brushed finish has a working range from 105mm to 165mm.

Compartment's Dimension

The recommended restroom cubicle size:

- 800 - 900 mm by 1500 - 1800 mm by 2006 mm (W x D x H).
- Visible height of restroom compartment measured from bottom of the Flat Bar is 2000 mm (inclusive floor clearance of 150 mm).
- Door size shall be between 600 mm - 700 mm in width.
- Door size shall be between 900 mm - 1000 mm in width for ambulant restroom.

Finishes

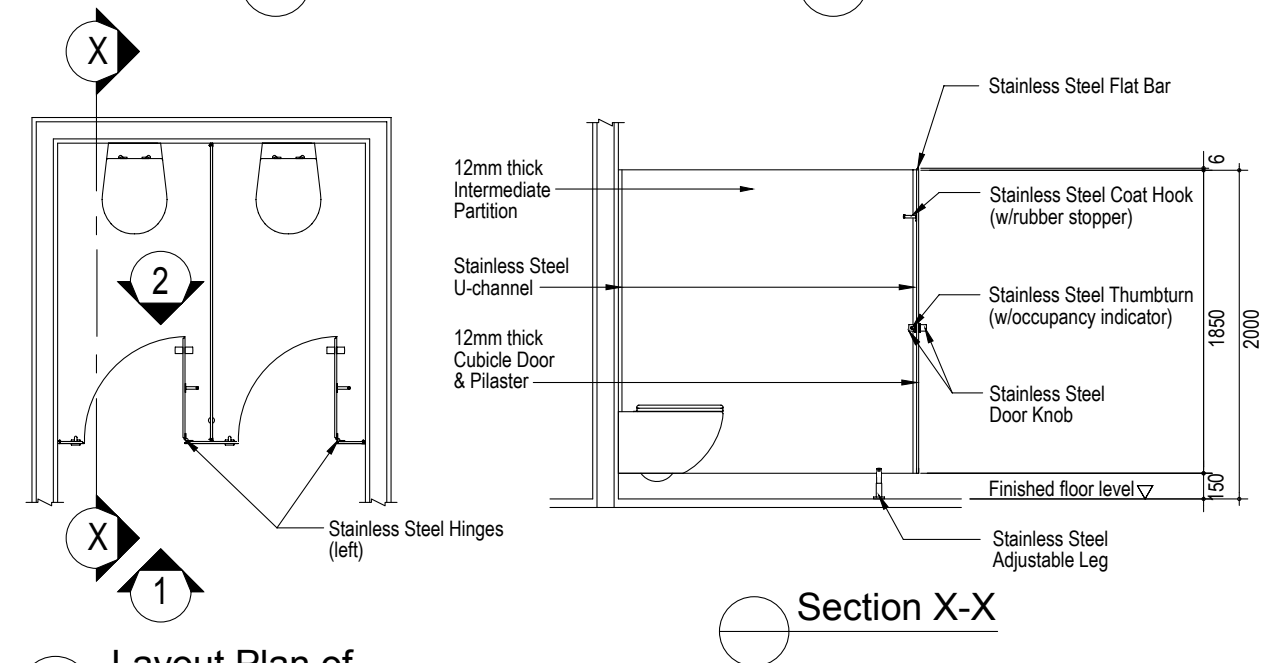
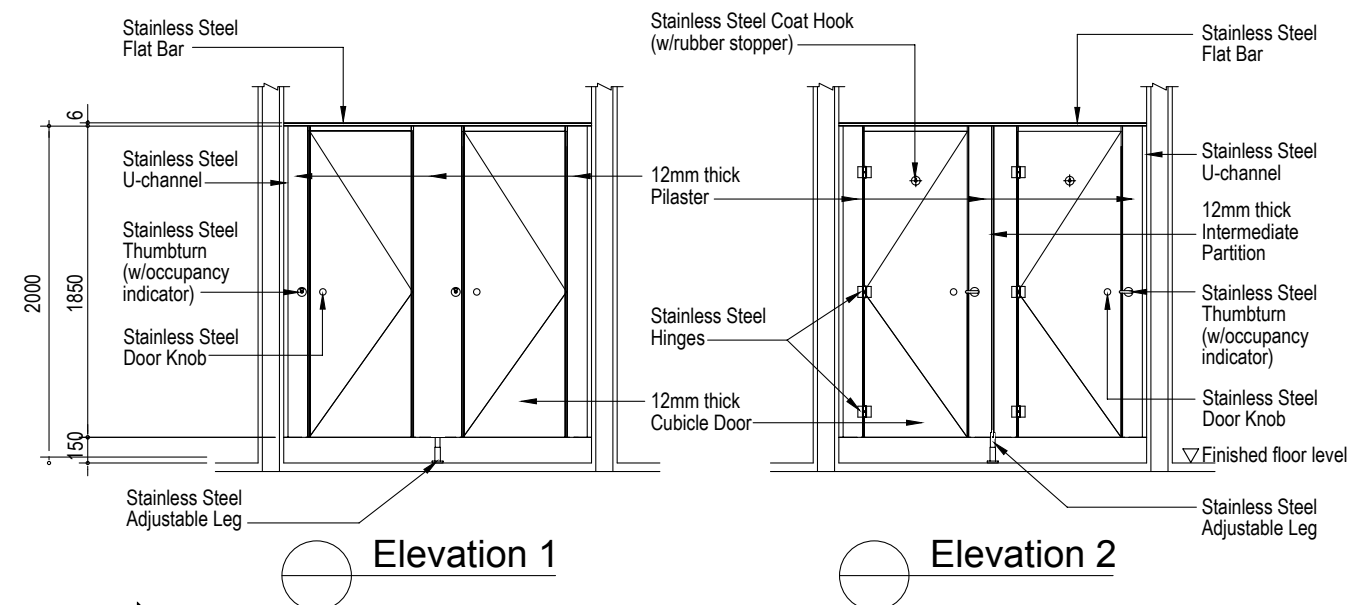
HPL compact boards are available in a variety of brilliant colours, woodgrains and tactile patterns. For surface finishes, you have the choices of matt or glossy. New 'MicroDot' tactile finish is available upon request.

Installation

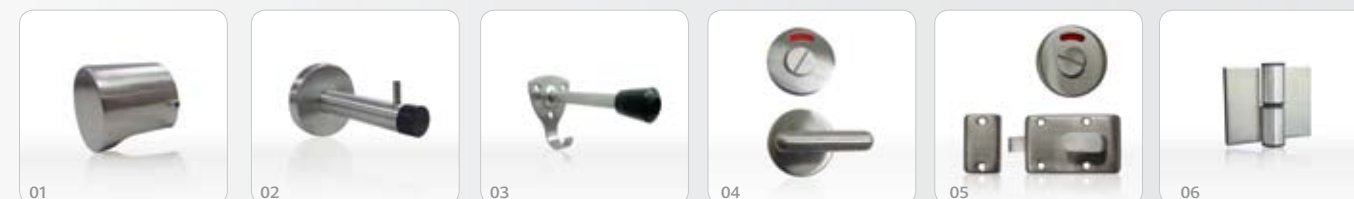
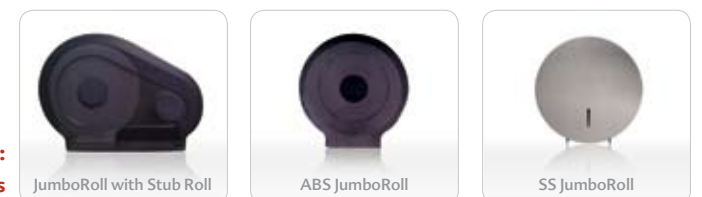
Installation will be executed under the supervision of BESCO™'s site supervisor(s) and shall be carried out in accordance with BESCO™ installation instructions.

Part Numbers

01. SS Door Knob with recess (dia-42mm)
02. SS Coat Hook (w/cover)
03. SS Tri Base Coat Hook
04. SS Thumbturn (w/occupancy indicator)
05. SS Lock Set (w/occupancy indicator)
06. SS Hinges (w/cover - Left)
SS Hinges (w/cover - Right)
07. SS Ambulant Hinge
08. SS Adjustable Leg
09. SS Flat Bar (6000mm)
10. SS U-channel (2200mm)
11. Black Rubber Sponge (1860mm)



**Optional:
Jumbo Roll Holders**



- SS accessories in grade 304.
- SS Hinges - normal is available upon request.
- *Please check with your local distributors for more information.

