

BEScube System

Besco Building Supplies (SEA) Pte Ltd
26 Ubi Road 4 The Besco Building Singapore 408613
t (65) 6286 0666 f (65) 6741 3430
sales@besco.sg www.besco.sg

Statements and recommendations provided by BESCO™ either communicated through publication or verbally are based on empirical data and experience acquired to date. Laminated HPL panels may be subjected to changes due to application methods, substrate variations and environmental conditions. Images appearing in our publication / website are meant to be used as reference materials. No liability may be derived from it as results may vary individually.

TITAN^{box} SS+SS.13.03.001

TITAN^{box}

Pursuing a sleek design concept, TITAN^{box} restroom cubicle system was created. This system eliminates the need for a top rail. The system has cleverly integrated the pilaster into a full stainless steel box-up. The outcome of the system demonstrates that a restroom cubicle could also be as trendy as one could imagine.



BescoTM
MANAGING SPACE



TITAN^{box} Accessories + Specifications + Drawings

Stainless Steel + Stainless Steel (grade 304)

General

BESCO™ supply and install^{*} TITAN^{box} Restroom Cubicle System, which is highly resistant against water, chemical and impact.

Materials

All accessories and hardware/fittings shall be made of stainless steel grade 304. The doors and pilasters shall be 19mm while the intermediate partitions shall be 12mm High Pressure Laminates (HPL) compact board (or phenolic board) with chamfered edges.

HPL compact boards are manufactured from sheets of special kraft and decor papers, impregnated with thermosetting synthetic resins, fused together under heat and high pressure. HPL compact board has laminates on both sides with either matt finish or textured finish. The performance of the board is tested according to BS EN Standards and has the following rating:

- ▶ Boiling Water (EN438-7) : 8.4 (Within max. 11.5)
- ▶ Fire Rating (EN476-6/7) : Class 1 (meet min. 1)
- ▶ Impact (EN438-11) : 2.8 Newton (exceed min. 2.0)
- ▶ Stain (EN438-15) : 5 (exceed min. 4)
- ▶ Scratch (EN438-2) : 4 Newton (exceed min. 2.0)

It is a natural occurrence under various climatic conditions that HPL compact boards may undergo dimensional changes of tolerance differences within ±5mm.

HPL compact boards used in our systems are certified by Singapore Environment Council with Singapore Green Label.

Doors

All doors shall be of single colour, 19mm thick HPL compact board with chamfered edge. Each will be supported by 3 Stainless Steel Hinges (4 Stainless Steel Hinges for Door width ≥ 750mm) affixed to the pilaster, completed with Stainless Steel Coat Hook and Stainless Steel Door Knob. Doors will be routed at its vertical ends and incorporated with Rubber Sponge to dampen noise.

Pilasters

All pilasters shall be of same colour as doors, 19mm thick HPL compact board with chamfered edge and completed with Stainless Steel Thumbturn for locking doors. Colours different from doors are available upon request. The pilaster shall be anchored to the floor using L-plates and covered with Stainless Steel Box Up. Pilasters will be routed at its vertical ends to facilitate closure of doors. The floor clearance is 110mm. BESCO™ recommends standard pilaster width to be 300mm and end pilaster width to be 150mm for maximum stability.

Intermediate Partitions

All intermediate partitions shall be of same colour as door, 12mm thick HPL compact board with Stainless Steel U-channel, 21.5mm x 14.5mm x 1mm (cross-section dimension, L x W x Thk), affixed at its ends (to the wall and pilaster). To improve stability of the system, BESCO™ recommends that length exceeding 1700mm or height up to 2000mm. It is advised an extra Pedestal to be fitted or increase thickness to 19mm HPL compact board.

Accessories

Each restroom cubicle will be equipped with the following accessories:

- ▶ BESCO™ Stainless Steel Door Knob of either Ø50mm, Ø42mm or Ø30mm with anti-slip groove.
- ▶ BESCO™ Stainless Steel Thumbturn with occupancy indicator. Stainless Steel Lock Set is also available upon request.
- ▶ BESCO™ Stainless Steel Coat Hook with rubber stopper comes with/without cover and allow load up to 25kg.
- ▶ BESCO™ Stainless Steel Hinges with cover, adjustable from fully close to open at interval of 15°.
- ▶ BESCO™ Stainless Steel Box Up with height 100mm and brushed finish.

Compartment's Dimension

The recommended restroom cubicle size:

800 - 900mm by 1500 - 1800mm by 1940mm (W x D x H).

- ▶ Height of restroom compartment measured from top of the pilaster is 1940mm (inclusive floor clearance of 110mm).
- ▶ Door size shall be between 600 mm - 700mm in width.
- ▶ Door size shall be between 900 mm - 1000mm in width for ambulant restroom.

Finishes

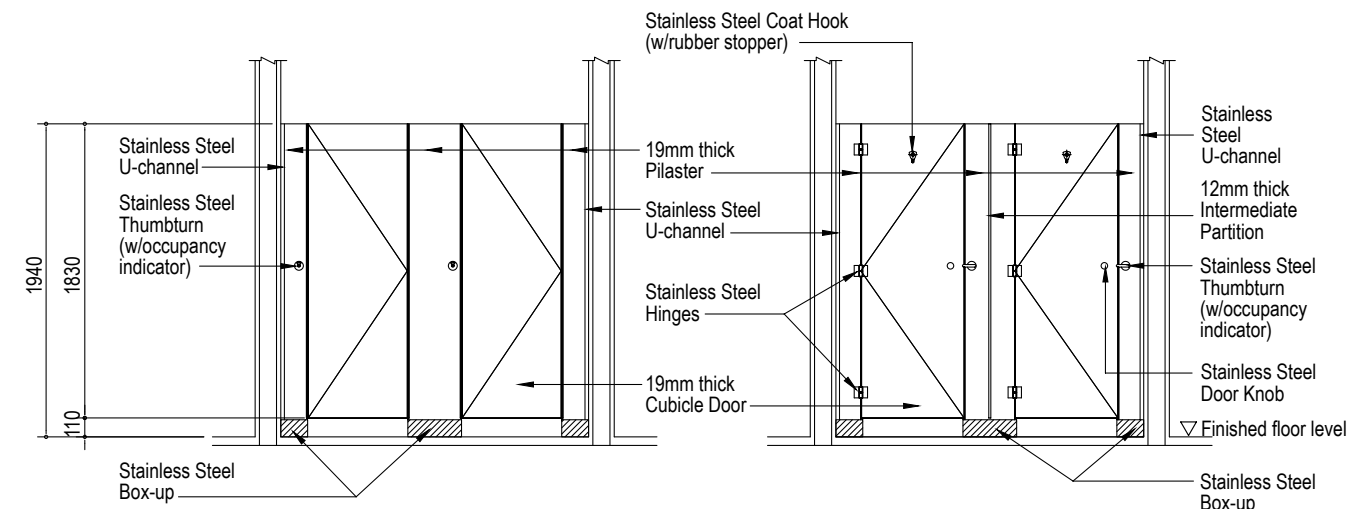
HPL compact boards are available in a variety of brilliant colours, woodgrains and tactile patterns. For surface finishes, you have the choices of matt or glossy. New 'MicroDot' tactile finish is available upon request.

Installation

Installation will be executed under the supervision of BESCO™'s site supervisor(s) and shall be carried out in accordance with BESCO™ installation instructions.

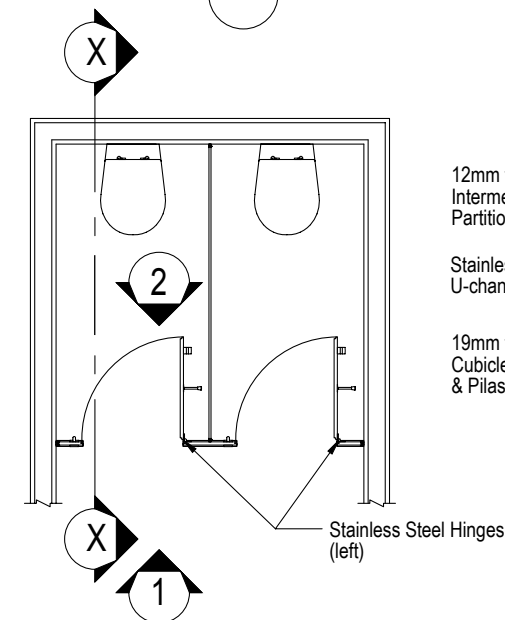
Part Numbers

01. SS Door Knob (dia-50mm, pair)
02. SS Door Knob with recess (dia-42mm)
03. SS Door Knob (dia-30mm, pair)
- 04a. SS Coat Hook (w/cover)
- 04b. SS Tri Base Coat Hook
05. SS Thumbturn (w/occupancy indicator)
06. SS Lock Set (w/occupancy indicator)
07. SS Long Lock Set (w/occupancy indicator)
- 08a. SS Hinge (w/cover - Left)
- 08b. SS Hinge (w/cover - Right)
- 08b. SS Ambulant hinge
09. SS Box Up
- 09a. SS Side Cover
- 09b. SS Front Cover (1200mm)
10. SS U-channel (2200mm)
11. Black Rubber Sponge (1860mm)

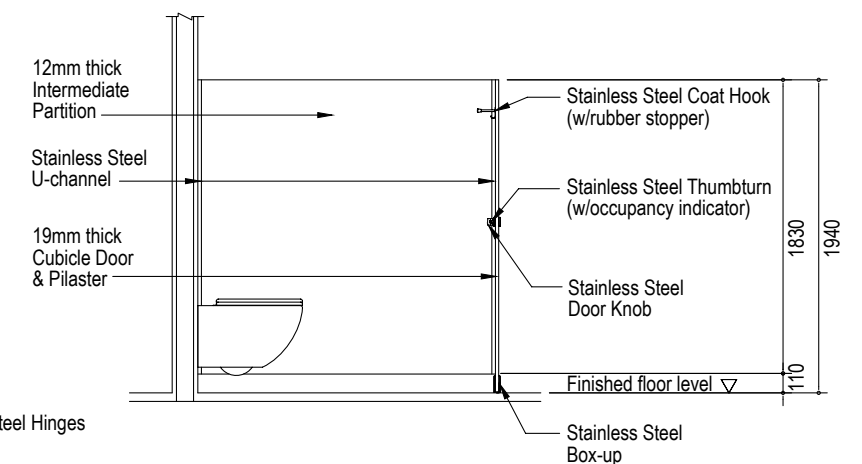


Elevation 1

Elevation 2



Layout Plan of Restroom Cubicle



Section X-X

Optional:
Jumbo Roll Holders



- ▶ This is a 19mm system.
- ▶ SS Hinges - normal is available upon request.

- ▶ SS accessories in grade 304.
- ^{*} Please check with your local distributors for more information.



Formica® Compact® Grade Laminates are certified by Singapore Environment Council with Singapore Green Label.



FLOOR MOUNT